



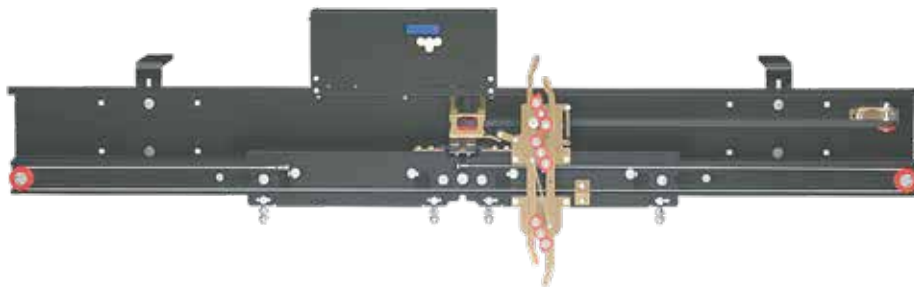
Quya
LIFT

- 
- 03 Automatic Door
 - 05 Semi-Automatic Landing Door
 - 07 Semi-Automatic Freight Landing Door
 - 08 Service (Catering) Elevator
 - 09 Cabins
 - 19 Elevator Guide Rail
 - 20 Machine
 - 21 Suspensions
 - 22 Hydraulic Lift Systems
 - 23 Buttons
 - 25 Control Panel
 - 27 Cable
 - 28 Guide Rail Bracket
 - 29 Lift Equipment
 - 31 Escalator
 - 32 Photocell
 - 33 Package Material



Cabin Door

Landing Door



Cabin Door

Landing Door





4 Panels



3 Panels



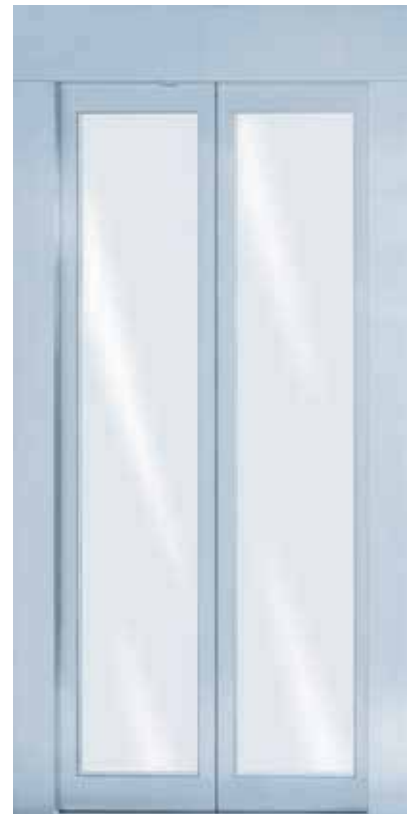
2 Panels



Glass Panels - 1



Glass Panels - 2



Glass Panels - 3



Semi - Automatic Landing Door



Door - 1



Door - 2



Door - 3



Door - 4



Door - 5



Semi - Automatic Landing Door



Door - 6



Door - 7



Door - 8



Door - 9



Door - 10



Door - 6



Door - 7



Door - 8



Door - 9



Door - 10



Door - 6



Door - 7



Door - 8



Door - 9



Door - 10



Semi - Automatic Freight Landing Door



Double Wing Door - 1



Double Wing Door - 2

Folding Door Bus Type





Service (Catering) Elevator



Cabin



Guillotine Door





QUYA - 01

<i>Coating</i>	<i>Horizontal Laminate</i>
<i>Accessory</i>	<i>Stainless Mirror</i>
<i>Ceiling</i>	<i>Laser Cut</i>
<i>Floor</i>	<i>Naturel Granite</i>
<i>Mirror Type</i>	<i>Half Scale</i>
<i>Railing</i>	<i>Stainless Pipe</i>

QUYA - 03

<i>Coating</i>	<i>RAL Coating Glass</i>
<i>Accessory</i>	<i>Stainless Mirror</i>
<i>Ceiling</i>	<i>Laser Cut</i>
<i>Floor</i>	<i>Naturel Granite</i>
<i>Mirror Type</i>	<i>Full Scale</i>
<i>Railing</i>	<i>Stainless Pipe</i>





QUYA - 02

<i>Coating</i>	<i>Monolithic Laminate</i>
<i>Accessory</i>	<i>Stainless Mirror</i>
<i>Ceiling</i>	<i>Laser Cut</i>
<i>Floor</i>	<i>Naturel Granite</i>
<i>Mirror Type</i>	<i>Half Scale</i>
<i>Railing</i>	<i>Stainless Pipe</i>

QUYA - 04

<i>Coating</i>	<i>Horizontal Laminate</i>
<i>Accessory</i>	<i>Stainless Mirror</i>
<i>Ceiling</i>	<i>Laser Cut</i>
<i>Floor</i>	<i>Naturel Granite</i>
<i>Mirror Type</i>	<i>Full Scale</i>
<i>Railing</i>	<i>Stainless Pipe</i>





QUYA - 05

<i>Coating</i>	<i>Stainless Vertical</i>
<i>Accessory</i>	<i>Stainless Mirror</i>
<i>Ceiling</i>	<i>Laser Cut</i>
<i>Floor</i>	<i>Naturel Granite</i>
<i>Mirror Type</i>	<i>Full Scale</i>
<i>Railing</i>	<i>Stainless Pipe</i>

QUYA - 07

<i>Coating</i>	<i>Vertical Laminate</i>
<i>Accessory</i>	<i>Stainless Mirror</i>
<i>Ceiling</i>	<i>Laser Cut</i>
<i>Floor</i>	<i>Naturel Granite</i>
<i>Mirror Type</i>	<i>Half Scale</i>
<i>Railing</i>	<i>Stainless Pipe</i>





QUYA - 06

<i>Coating</i>	<i>Horizontal Laminate</i>
<i>Accessory</i>	<i>Stainless Mirror</i>
<i>Ceiling</i>	<i>Laser Cut</i>
<i>Floor</i>	<i>Naturel Granite</i>
<i>Mirror Type</i>	<i>Half Scale</i>
<i>Railing</i>	<i>Stainless Pipe</i>

QUYA - 08

<i>Coating</i>	<i>Horizontal Laminate and Stainless</i>
<i>Accessory</i>	<i>Stainless Mirror</i>
<i>Ceiling</i>	<i>Laser Cut</i>
<i>Floor</i>	<i>Naturel Granite</i>
<i>Mirror Type</i>	<i>Half Scale</i>
<i>Railing</i>	<i>Stainless Pipe</i>





QUYA - 09

<i>Coating</i>		<i>Digital Printing Laminate</i>
<i>Accessory</i>		<i>Stainless Mirror</i>
<i>Ceiling</i>		<i>Laser Cut</i>
<i>Floor</i>		<i>Naturel Granite</i>
<i>Mirror Type</i>		<i>Full Scale</i>
<i>Railing</i>		<i>Stainless Pipe</i>

QUYA - 11

<i>Coating</i>		<i>Digital Printing Laminate</i>
<i>Accessory</i>		<i>Stainless Mirror</i>
<i>Ceiling</i>		<i>Laser Cut</i>
<i>Floor</i>		<i>Naturel Granite</i>
<i>Mirror Type</i>		<i>Full Scale</i>
<i>Railing</i>		<i>Stainless Pipe</i>





QUYA - 10

<i>Coating</i>	<i>RAL Painted</i>
<i>Accessory</i>	<i>RAL Painted</i>
<i>Ceiling</i>	<i>Spotlight On Ceiling</i>
<i>Floor</i>	<i>Aluminium Cheta</i>
<i>Railing</i>	<i>Protection Tape</i>



QUYA - 12

<i>Coating</i>	<i>RAL Painted</i>
<i>Accessory</i>	<i>RAL Painted</i>
<i>Ceiling</i>	<i>Spotlight On Ceiling</i>
<i>Floor</i>	<i>Aluminium Cheta</i>
<i>Railing</i>	<i>Protection Tape</i>



QUYA - 13

<i>Coating</i>	<i>Laminated Glass (Capsule)</i>
<i>Accessory</i>	<i>Mirror Stainless</i>
<i>Ceiling</i>	<i>Laser Cut</i>
<i>Floor</i>	<i>Naturel Granite</i>
<i>Railing</i>	<i>Stainless Pipe</i>

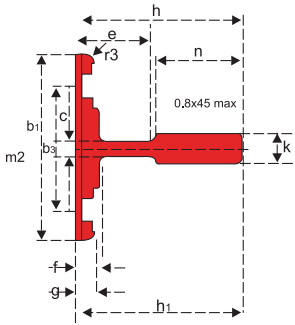
QUYA - 14

<i>Coating</i>	<i>Laminated Glass</i>
<i>Accessory</i>	<i>Mirror Stainless</i>
<i>Ceiling</i>	<i>Laser Cut</i>
<i>Floor</i>	<i>Naturel Granite</i>
<i>Railing</i>	<i>Stainless Pipe</i>



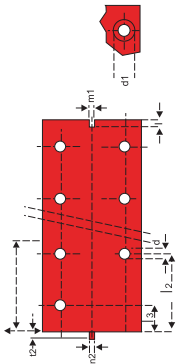


TECHNICAL CHARACTERISTICS



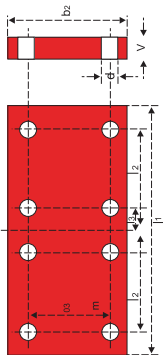
KOD / NO	EB AT / SIZE	s	q	e	I _{xx}	W _{xx}	I _{yy}	W _{yy}	I _{yy}	
		cm ²	Kg/m	cm	cm ⁴	cm ³	cm ⁴	cm ³	cm ⁴	
TOLERANSLA R - TOLERANCES										
T50 /A	50 x 50 x 5 mm	4.75	3.73	1.43	11.24	3.15	1.54	5.25	2.1	1.05
T70 /A	70 x 65 x 9 mm	9.40	7.37	2.03	40.95	9.16	2.08	18.86	5.38	1.41
T89 /A	89 x 62 x 16 mm	15.77	12.38	2.03	59.83	14.35	1.94	52.41	11.78	1.82
T90 /A	90 x 75 x 16 mm	17.25	13.54	2.61	102.0	20.86	2.43	52.48	11.66	1.74
T125/B	125 x 82 x 16 mm	22.82	17.91	2.43	151	26.16	2.572	159.1	25.46	2.641

DIMENSIONS



KOD / NO	EB AT / SIZE	b1	h1	h	k	n	c	g	f	rs	m1	m2	t1	t2
		TOLERANSLA R - TOLERANCES												
		±0.50	±0.10		±0.10	+3			±0.75		±0.60	±0.60	±0.10	±0.10
T50 /A	50 x 50 x 5 mm	50	50	49	5.0	27	4.25		7.3	1.0	2.60	2.55	3.50	3
T70 /A	70 x 65 x 9 mm	70	65	64	9.0	34	6.0	6.0	8.0	1.5	3.0	2.97	3.50	3
T89 /A	89 x 62 x 16 mm	89	62	61	16.0	34	10.0	7.9	11.1	3.0	6.4	6.37	4.50	4
T90 /A	90 x 75 x 16 mm	90	75	74	16.0	42	10.0	8	10	4.0	6.4	6.37	4.50	4
T125/B	125 x 82 x 16 mm	125	82	81	16	42	10	8	12	4.0	6.4	6.37	-	-

HOLES & FISHPLATES



KOD / NO	EB AT / SIZE	d	d	l	b ₂	b ₃	l ₁	l ₂	l ₃	v	CI VATA
		TOLERANSLA R - TOLERANCES									
						± 0.2	± 1.5	± 0.2	± 0.2	± 2	UNI5727 DIN601
T50 /A	50 x 50 x 5 mm	9			50	30	200	75	25	8	M8x25
T70 /A	70 x 65 x 9 mm	13			70	42	190	105	25	8.5/10	M12x35
T89 /A	89 x 62 x 16 mm	13			89	57.2		114.3	38.1		M12x35
T90 /A	90 x 75 x 16 mm	13			90	57.2		114.3	38.1		M12x35
T125/B	125 x 82 x 16 mm	17			130	79.4	305	114.3	38.1	17	M16x50





Gearless C200



Gearless C201



C100



C101



C102



C104



C103



C105



C106



C501



C502



C503



C504



C505



C506



C507



C508



Buttons



C109



C110



C111



C106



C107



C108



C100



C101



C102



C104



C105





Arcode Lift Control Panel



- Integrated controller and inverter
- Compatible to EN81-1 + A3 standards
- Operates with synchronous and induction motors
- Incremental Encoder (5V TTL & 10-30V HTL) or Absolute Encoder (ENDAT & SSI & SIN COS & BISS) options
- Speed: up to 4 M/s, Number of stops: Up to 64
- 8 Lifts group operation
- Door pre – opening and relevelling
- Fast start and Direct Landing
- Emergency rescue with UPS (easy direction)
- 2 independently operated car entrances
- Controlling Arcode via Arem keypad from anypoint of CANbus
- Digital Shaft copying.
- Door frame installation applications
- Monitoring screen specially designed for door frame applications; speed and direction of the cabin is shown.

Control Panel

- * Compatible to EN81-1 + A3 standards
- * Operates with synchronous and induction motors
- * ARL 300 Controller Card
- * Speed : Up to 1,6 M/s - Number of stops: Up to 24
- * 4 Lifts group operation
- * Emergency rescue with UPS (easy direction)
- * Door pre-opening and relevelling
- * Compatible with all kinds of auto-doors and manual doors
- * 2 Door controls for cabins with double entrances
- * 7 segment & Gray Code & Binary code display options
- * Panel illumination and cooling fan
- * Easy installation with serial communication with cabin



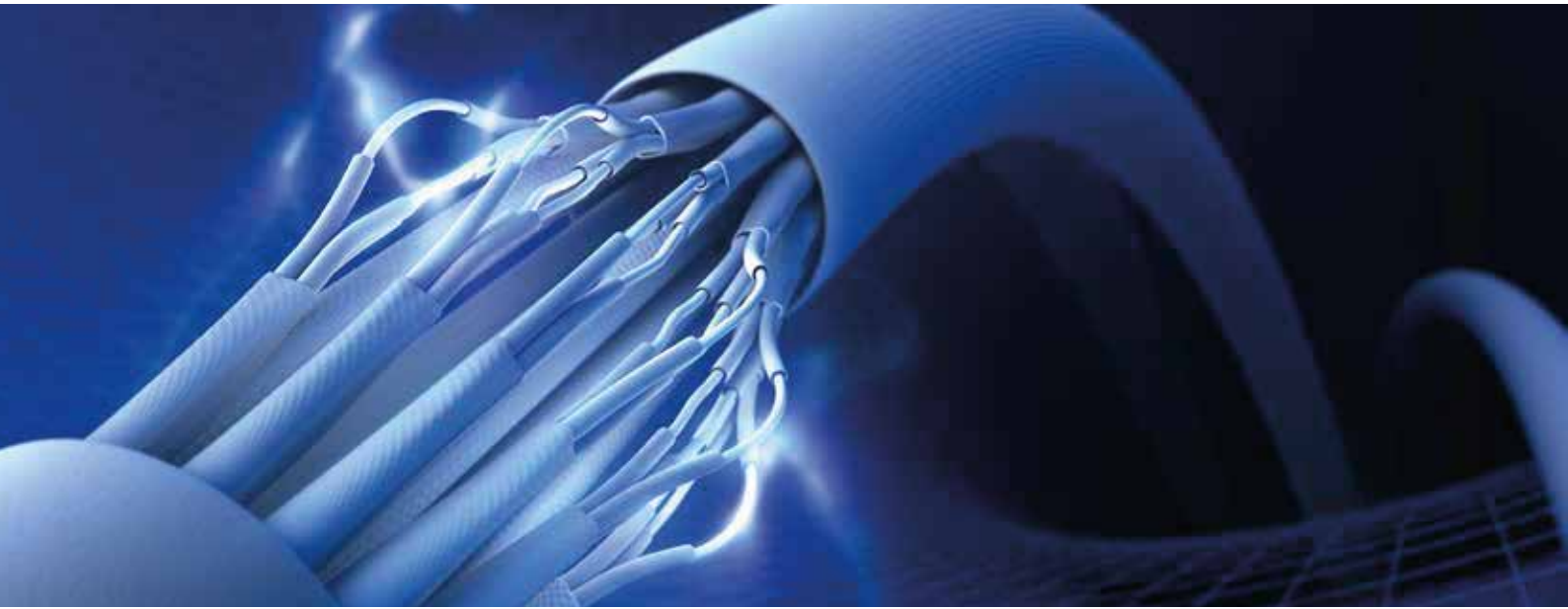


MRL Lift Control Panel



- Compatible to EN81 -1 + A3 standards
- Operates with synchronous and induction motors
- Specialised inverter for elevators; Fuji Frenic Lift
- Full collective 32 stops, 2,5 M/S capacity
- Ups emergency rescue
- Door pre – opening and releveling
- Double door control and door blocking on any floor
- CanBus one socket connection with LOP's and displays
- CanBus Plug & Play flexible cabin connections
- Test functions
- Shaft lighting control from 3 points via impuls relay
- Cooling fan and illumination in panels
- PC connections and individual software





Antigron Cable



Antigron Cable



1 mm Cable



13 Thread Cable



4 mm Cable



0,75 mm Cable



Flexible Cable



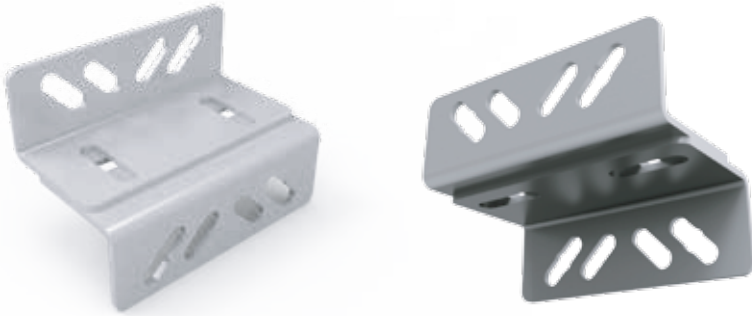
0,75 mm Cable



0,75 mm Cable



70X90



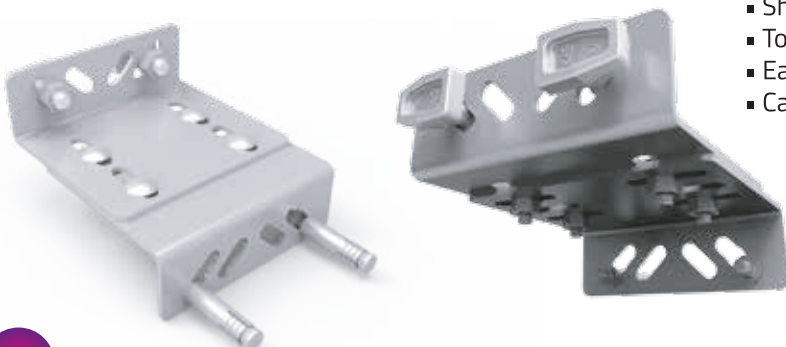
- High strength
- Each fingernail ray model is suitable.

Hydraulic Bracket

- To comply with the new regulation system bolted
- Each fingernail ray model is suitable.
- Can be produced in desired thickness and dimensions.



60X150



- Share movement 150-250 mm
- To comply with the new regulation system bolted
- Each fingernail ray model is suitable.
- Can be produced in desired thickness and dimensions.



Rope



Rope Attachment



Rope Holder



Oil Collection Container



Door Closer



Retiring Cam



Secured Overspeed



Secured Overspeed



Pulley



Oil Collection



Bolt



Flexible Cable Holder



Steel Dowel



Rail Clips



Klemens



Door Lock



Door Lock



Door Lock



Stop



Cable Channel



Switch



Guide Shoes



Roller Guide Shoes



Guide Shoes Insert



Buffer



Buffer



Weight



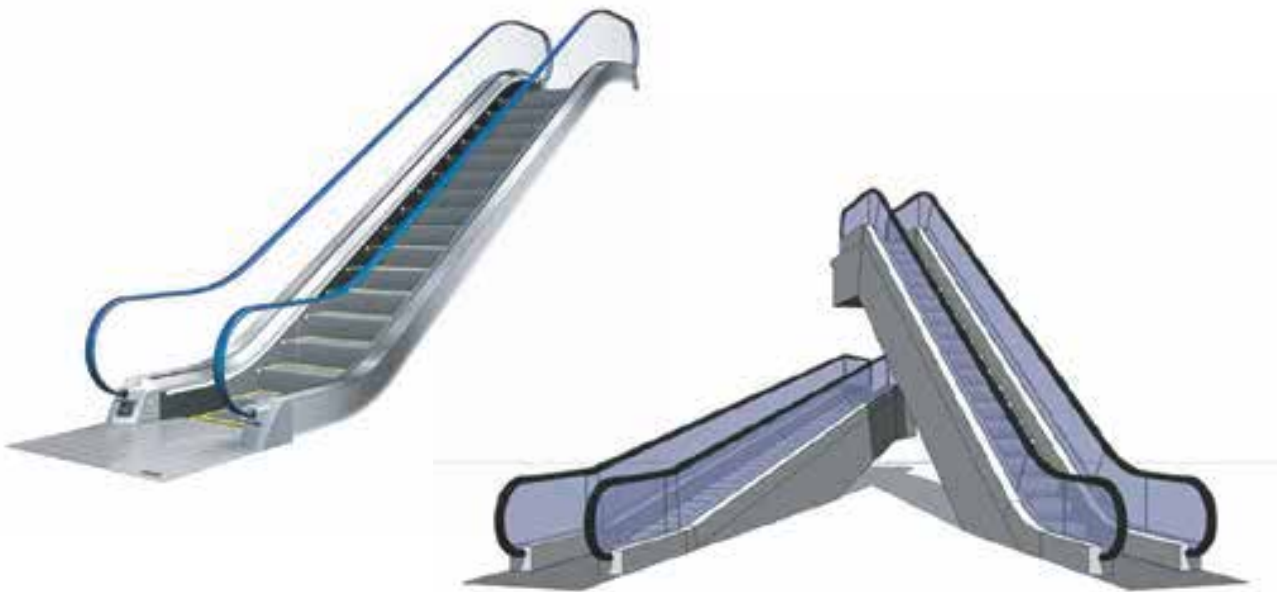
Hydraulic Buffer

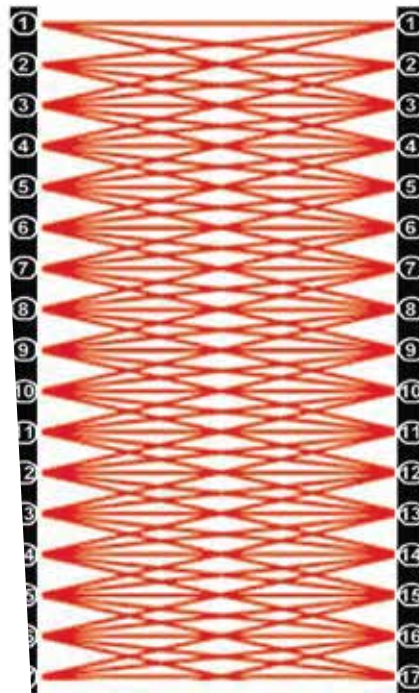


Buffer



Machine Wedge







We have a wide range of products with the distributorship agreements we have made with the leading companies of the industry.

In accordance with customer demands, we supply all the products related with the elevator with the best price and quality.





Quya
LIFT

www.quyalift.com - info@quyalift.com